



2.2, 17, NEWTON  
STREET, GREENOCK, PA16 8SA





## **Description**

\*Closing date on Wednesday 1st November at 11am\*

This well presented larger style two bedroom SECOND FLOOR FLAT has been freshly decorated and is set within a refurbished West End property. Particular features include a dining room and also master bedroom with ensuite shower room. Lies near the West Station offering a regular train service to Glasgow which is ideal for commuters plus is convenient for local amenities and shops. This flat would be ideal for a variety of buyers including first time purchasers and rental investors.

There is a communal rear drying green. The building is protected by a security door entry system. Specification includes: double glazing, gas central heating with new boiler installed in January 2023 and laminate flooring. There is a well presented communal entrance stair which has been repainted in recent years.

The bright accommodation comprises: generous sized Entrance Hallway by timber door with inbuilt cupboard. There is an airy front facing spacious Lounge which has a two light window and alcove. The Dining Room enjoys a south facing aspect and gives access to the fitted Kitchen which benefits from oak style units, marble effect work surfaces and splashback tiling. Appliances include: extractor hood, gas hob, electric oven and washing machine.

There are two double sized Bedrooms. The Master Bedroom offers a bank of fitted wardrobes and Ensuite Shower Room with two piece suite comprising: wash hand basin and shower cubicle with "Mira" shower. The Bathroom with rear window feature a three piece suite comprising: vanity wash hand basin set within white high gloss unit, wc and bath with shower. Additional benefits include: partial wall tiling and shower screen.

Early viewing is recommended for this centrally located two bedroom West End home. EPC = C

## **Measurements**

Hallway

Lounge

4.29m x 5.05m (14'1 x 16'7)

Dining Room

3.96m x 3.94m (13'0 x 12'11)

Kitchen

2.39m x 3.02m (7'10 x 9'11)

Master Bedroom

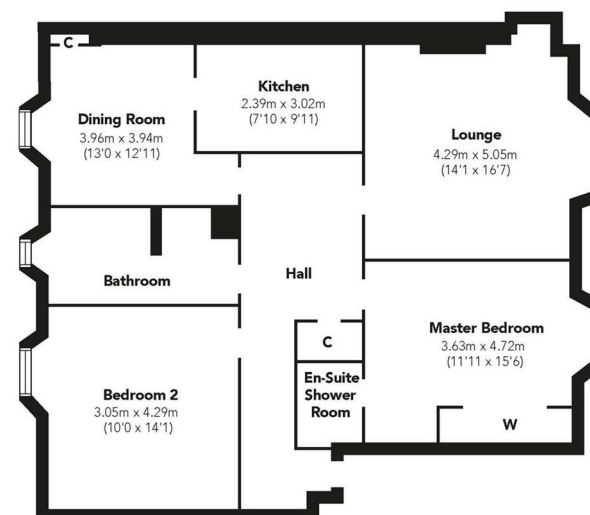
3.63m x 4.72m (11'11 x 15'6)

Ensuite Shower Room

Bedroom 2

3.05m x 4.29m (10'0 x 14'1)

Bathroom



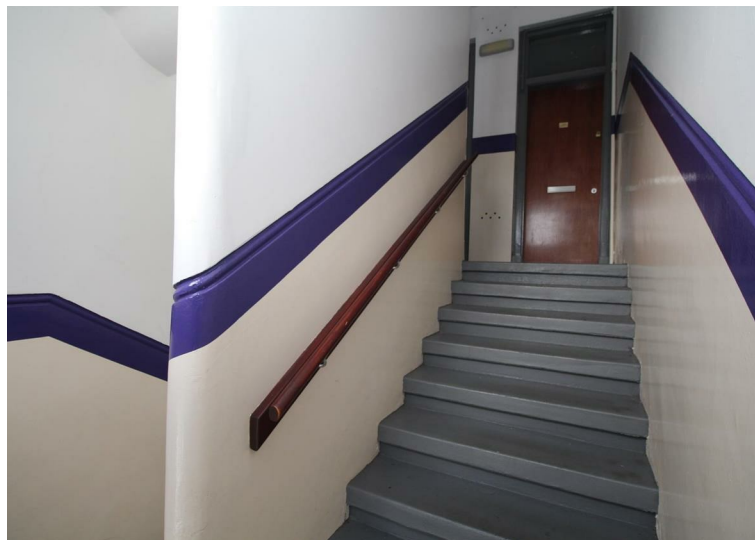
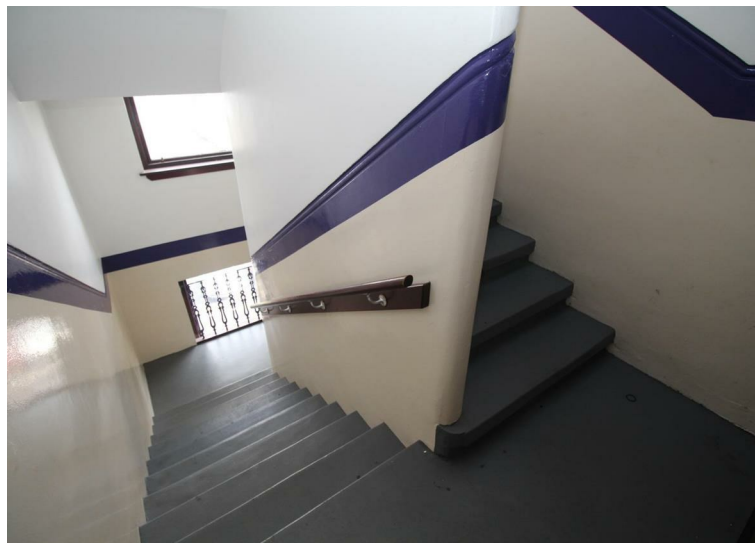
Floorplans are indicative only - not to scale  
Produced by Plushplans 











#### Agents Notes:

These sales particulars are set out as a general outline only, issued in good faith, but do not constitute representations of fact and do not form part of any offer or contract. Any services, equipment, appliances, fittings or central heating systems have not been tested and no warranty is given or implied that these are in working order. All measurements are approximate and for guidance only.

Neither Neill Clerk Estate Agents nor any of its employees or agents has any authority to make or give any representation or warranty whatever in relation to this property.

The  
next  
step..



To view call 01475 888400. Speak to us 7 days a week until 11pm every day to book your viewing appointment.

#### House to sell or rent?

Call 01475 888400 to book your free market appraisal.

#### Require a solicitor?

Ask us to supply a free legal quotation from Neill Clerk & Murray, Solicitors.  
[www.neillclerkmurray.co.uk](http://www.neillclerkmurray.co.uk)

Stay fully up-to-date by following Neill Clerk on:



**60 West Blackhall Street  
Greenock  
Renfrewshire  
PA15 1UY**

**t: 01475 888400**

**e: [sales@neillclerk.co.uk](mailto:sales@neillclerk.co.uk)**

**w: [www.neillclerk.co.uk](http://www.neillclerk.co.uk)**



Find all our properties at: [rightmove](https://www.rightmove.co.uk) [Zoopla](https://www.zoopla.co.uk) [onTheMarket.com](https://www.onthemarket.com) [s1homes.com](https://www.s1homes.com)